

FOREWARNER SAFETY LIGHTS

Forklift LEDS in **Red** + **Blue** in Spot, Line or Arrow

Pedestrian hazards around forklifts:

- Forklifts have large radius rear end swing — heavy — large mass.
- Forklifts run into pedestrians — who are NOT paying attention.
- Forklifts can crush pedestrians against walls—racks—machinery
- Forklifts can run over feet — because workers are too close.
- Corners — blind intersections create forklift—worker proximity.
- Workers can try to “squeeze by” forklifts and get seriously hurt.
- Forklift drivers concentrate on the load and may NOT see workers.

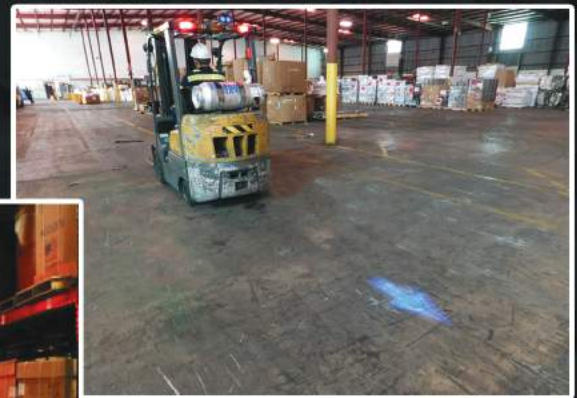


Danger
Fork lift trucks

Why you want one:

- Reduce accidents!! 40+% of all fatal forklift accidents involve pedestrians.
- Pedestrian sees moving spot, line or arrow on floor — improves awareness of pedestrians significantly.
- Very effective for forklifts working in areas with many pedestrians.
- Most pedestrians don't understand the crushing force of a forklift tire or rear end swing.
- Creates highly visible warning spot, line or arrow — obvious to pedestrians to stand and walk clear.

Ensure pedestrians stay a safe distance away from the forklift!



9 LED Models:

FWN-45W-LDS0041B (45 Watt Blue)

FWN-27W-LDS0041R (27 Watt Red)

- Supply voltage: 9 to 60 VDC
- Waterproof rating: IP68
- Size: 7.8" X 5" X 1.1" (199 X 128 X 28mm)
- Material: Aluminum die cast housing
- Cable length: 10' (3.3m)
- Approval: ISO9000—CE—RoHS
- Lifetime hours: up to 30,000—50,000 hours
- LED 9 Focused—CREE 45 Watt (B) 27 Watt (R)



2 LED - MINI Models:

FWN-10W-MINI-B (10 Watt Blue)

FWN-6W-MINI-R (6 Watt Red)

- Supply voltage: 9 to 60 VDC
- Waterproof: IP68
- Size: 4" X 2.5" X 3" (100 X 164 X 75mm)
- Material: Aluminum die cast housing
- Cable length: 10' (3.3m)
- Approval: ISO9000—CE—RoHS
- Lifetime hours: up to 30,000—50,000 hours
- LED 2 Focused—CREE 10 Watt (B) 6 Watt (R)

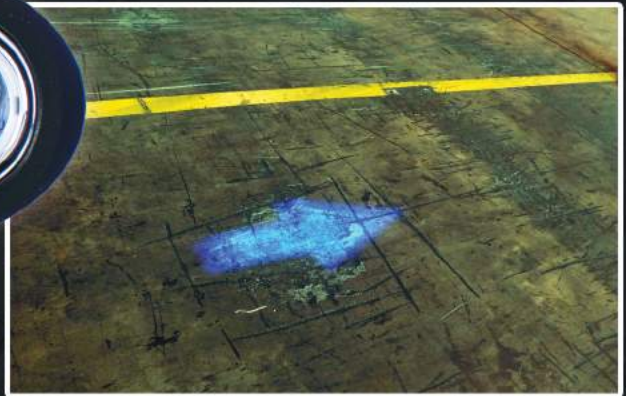


2 LED - ARROW Models:

FWN-10W-ARROW-B (10 Watt Blue)

FWN-6W-ARROW-R (6 Watt Red)

- Supply voltage: 9 to 80 VDC
- Waterproof: IP68 Dustproof, Shockproof
- Size: 3.5" X 5.6" X 3.5" (90 X 143 X 90mm)
- Material: Aluminum die cast housing
- Cable length: 10' (3.3m)
- Approval: ISO9000—CE—RoHS
- Lifetime hours: up to 30,000—50,000 hours
- LED 2 Focused—CREE 10 Watt (B) 6 Watt (R)



Other FOREWARNER products:

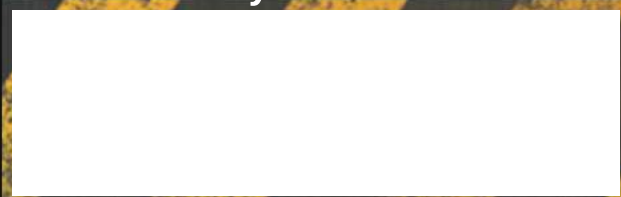
FOREWARNER-MAXI (pictures on far left)

Powerful Blue, Red or White 24 LED spotlight or linelight for overhead cranes that comes standard with a lens cover that turns the spot into a line on the floor below.

FOREWARNER-SIDELINER (pictures on near left)

Green laser + LED pedestrian warning forklift sidelights.

Distributed by:



KEYTROLLER

CREATING A CULTURE OF SAFETY

813-877-4500 sales@keytroller.com